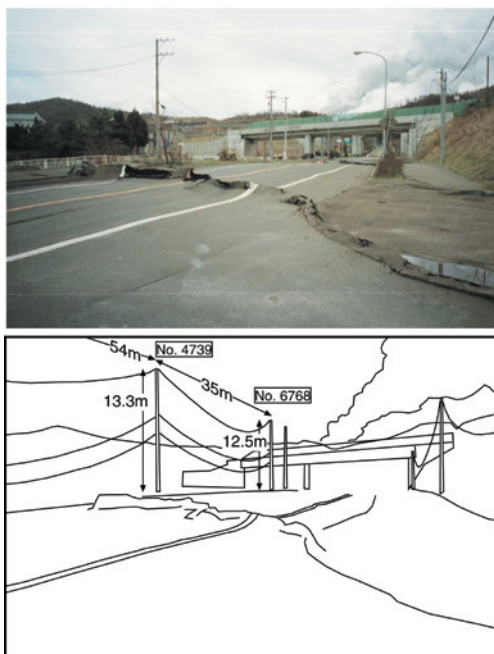


Crustal Movement Detected by Interval Changes between Poles

Remarkable crustal movement occurred near the eruption area associated with the 2000 eruption of Usu volcano, Japan. In order to clarify the regional crustal movement, we measured the intervals between the poles of aerial cables two times after the eruption. As a result, we observed significant shortening of the intervals near the eruption point. We also tried to estimate the amplitude of the interval shortening by using the sag of the cables. The sag of 3 - 4 m at the interval of 35 m as shown in the figure corresponds to the interval shortening of 0.7 - 1.2 m.



Crustal deformation near the eruption area

Tsutomu SATO

*Institute of Geoscience
e-mail:
sugar@ni.aist.go.jp
AIST Today Vol. 3, No. 6
(2002) 29*